



## SUPPORT BOAT REGULATIONS

### Support Boats shall carry the following Equipment on board

- Life jackets/buoyance aids for the driver and all passengers
- Engine kill cord (also known as a safety lanyard or automatic engine immobiliser) with a spare kill cord on the support boat
- VHF radio capable of receiving instruction from Safety or Race Committee
- First-aid kit
- Device for making a sound signal
- Compass
- Adequate anchor and tackle for conditions and depth
- Tow rope (minimum 15m long and 10mm thick)
- Knife

### Support Boat Regulations

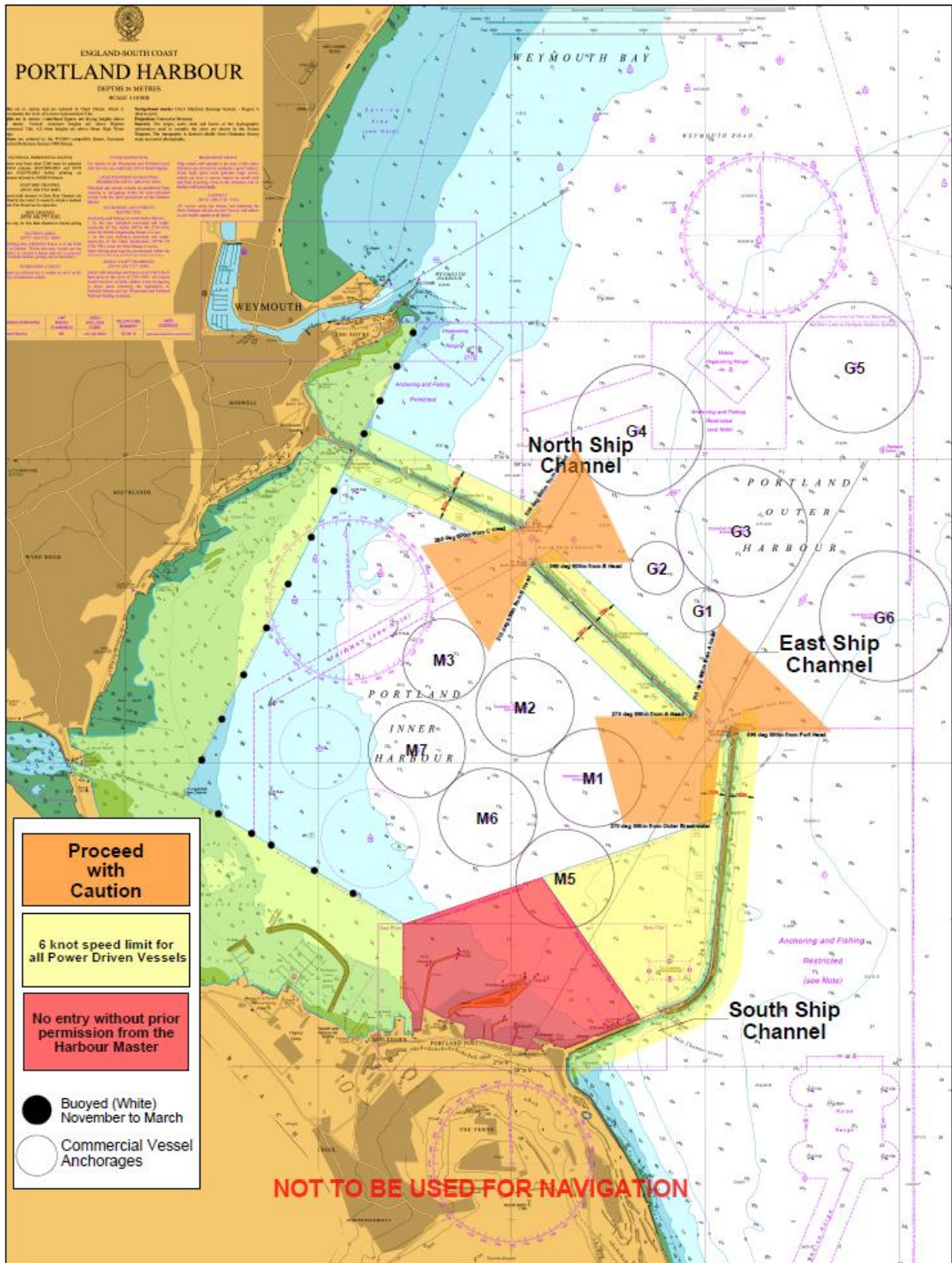
- Support Boats shall be registered with the Organising Authority and shall be marked with their applicable national sail letters clearly displayed, the minimum height for these letters is 200mm.
- Support Boats shall comply with all local regulations
- Support Boats shall follow Race Committee instructions on the designated VHF channel
- Kill cords shall be worn at all times when the engine is running
- Life jackets / buoyance aids - it is recommended that they are worn at all times when afloat and **shall** be worn in winds of over 10 knots or when motoring at more than 10 knots
- Support boats shall not be positioned, except during rescue operations
  - Closer than 100 metres of any boat racing
  - Within 100 metres of the starting line from the warning signal until all boats have left the starting area or the race committee signals a postponement, general recall or abandonment
  - Within 100 metres of any mark of the course while boats are in the vicinity of that mark
  - Within 100 metres of the finishing line while boats are finishing
  - In addition, support boats that are motoring above 5 knots shall remain at least 150 metres from any boat racing

### Local Regulations

- Support Boats shall complete registration before launching.
- In order to prevent fuel spillage, refuelling of boats/tanks is not permitted on the pontoons at WPNSA. Boats may refuel at Portland Marina fuel pontoon or tanks may be taken offsite to be refuelled at a local service station.
- Boats shall not transit at any time through the RNSA moorings, which are to the left of the Marina exit as leaving the Marina.
- Only the Northern entrance should be used in leaving or returning to Portland Inner Harbour, unless directed otherwise by an Official or Portland Harbour Authority Boat.
- The chart on the following below shows the Portland Harbour Speed Limits and Restrictions which must be adhered to.



# Portland Harbour Speed Limits and Restricted Area's



Reproduced from Admiralty Chart BA2268 by permission of the controller of Her Majesty's Stationary Office and UK Hydrographic Office ([www.ukho.gov.uk](http://www.ukho.gov.uk))

This is an interpretation of the Portland Harbour Revision Order 1997. The Portland Harbour Revision Order 1997 will take precedence in all cases.

Portland Harbour Revision Order 1997 Schedule 1, Paragraphs 1, 6, and 7.

Version 1 March 2014